

# Municipal population update

Results analysis

## INDEX

<b>HISTORICAL APPROXIMATION .....</b>	<b>2</b>
<b>THE POPULATION OF THE A.C. OF THE BASQUE COUNTRY .....</b>	<b>3</b>
<b>THE POPULATION OF THE MUNICIPALITIES.....</b>	<b>7</b>
<b>The large municipalities .....</b>	<b>10</b>
<b>The medium-sized municipalities .....</b>	<b>10</b>
<b>The intermediate municipalities .....</b>	<b>11</b>
<b>The small municipalities.....</b>	<b>13</b>

## MUNICIPAL POPULATION UPDATE

The Municipal Population Update offers annual continuity to the population figures provided by Censuses and, until 1996, Municipal Register Renewals. In addition, it lets us compare the intensity of demographic phenomena -natural and migratory- as regards their contribution to the numerical variations of the population of the Autonomous Community of the Basque Country in various territorial areas: province, district and municipality.

The intention therefore is to provide annually updated data on the legal population of the municipalities of the Autonomous Community of the Basque Country in inter-register periods, using the reference date of 31<sup>st</sup> December every year. As regards its content, the website offers population figures and a breakdown of the component parts of the population variation, by province, district and municipality, as well as the structure of the population by sex and age at provincial level.

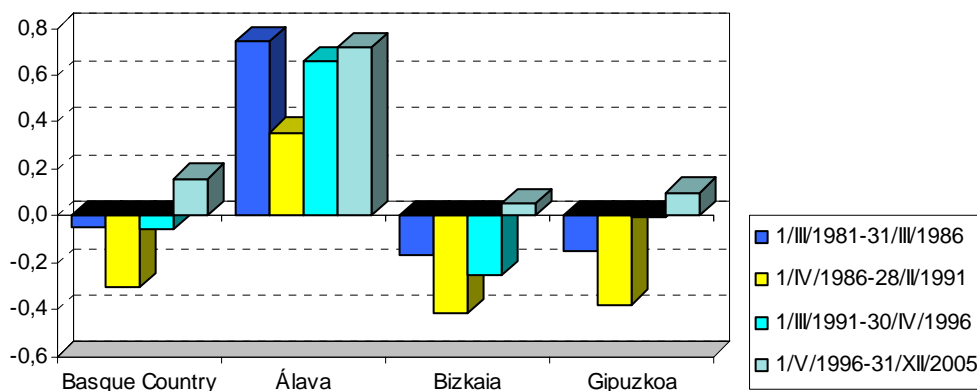
In order to make the interpretation of this analysis clearer, it should be pointed out that the pattern followed here tackles population changes in terms of size of population centre, going from larger to smaller: A.C. of the Basque Country, provinces, districts and finally, municipalities grouped together according to size.

Following an initial historical approximation by means of the Censuses and Register Renewals of 1981, 1986, 1991 and 1996, the temporal coverage considered in the analysis takes in two reference dates: on the one hand, the inter-census period stretching from May 1<sup>st</sup> 1996 to the Population Update in question dated 31<sup>st</sup> December 2005 and on the other, the annual variation since the last Population Update published by **Eustat**.

### HISTORICAL APPROXIMATION

The evolution of the major population figures shows the downward trend of the population that began in our Community at the beginning of the 80s to be levelling off. The inter-census growth rate of the A.C. of the Basque Country –which indicates the average annual percentage variation in the population since the last Register Renewal- changed course recently. In the first three inter-register periods analysed (1981-1986, 1986-1991 and 1991-1996), the rates fluctuated between -0.1% and -0.3%. In the most recent inter-register period, between 1<sup>st</sup> May 1996 and December 2005, it stood at 0.15%.

1. Evolution of the inter-census growth rate by province (%)

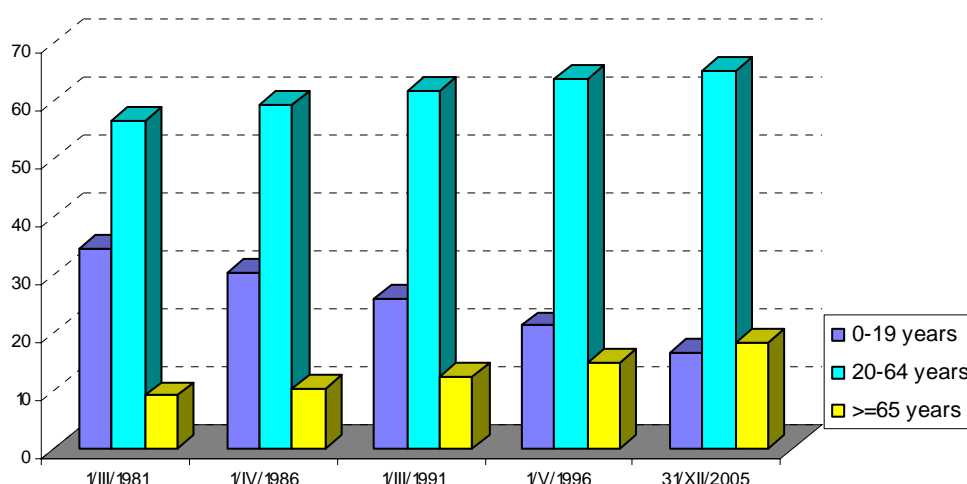


Source: Eustat

Between 1981 and the end of 2005, the A.C. of the Basque Country registered a loss of 13,409 people, which is to say 0.6% of its population. Álava was the only province with uninterrupted population increases, showing an increase in numbers for every inter-census period analysed and gaining 43,559 people between 1981 and December 2005, a rise of 16.9%. Over the same period the populations of Bizkaia and Gipuzkoa diminished, especially Bizkaia with a loss of 44,416 people, representing 3.7% of its total population. As for Gipuzkoa, over this time it lost 12,168 inhabitants, which is to say almost 1.8% of its population.

As regards the population structure of the A.C. of the Basque Country, the evolution of distribution by the major age groups showed a pronounced and continuous fall in numbers among the youngest age groups, whereas at the same time, the most senior ones increased. Between 1981 and 2005 the population of the Community aged between 0 and 19 fell from 34% to 17%, while during the same time, the population aged 65 and over doubled in number, going from 9% to 18%.

## 2. Evolution of the population structure of the A.C. of the Basque Country by age group (%)



Source: Eustat

## THE POPULATION OF THE A.C. OF THE BASQUE COUNTRY

According to the most recent Register Renewal from 1<sup>st</sup> May 1996, the A.C. of the Basque Country had 2,098,055 inhabitants. This initial figure was corrected by successive modifications produced during the inter-register period and errors intrinsic to any Register Renewal (generally undervaluing) as well as errors in the subsequent register process. In this respect, before 31<sup>st</sup> December 2005 there were 37,991 omissions and 25,869 duplicates and incorrect inclusions, so that the real population on the date of this Renewal came to 2,110,177 inhabitants.

Using this corrected figure, the population update is carried out using basic demographic components: natural population growth and migratory balance. Between the Register Renewal of 1/5/96 and the Population Update of 31/12/05, the A.C. of the Basque Country underwent an increase of 30,345 people, with the total reaching 2,140,908 inhabitants. In this inter-register period, the population variation taken from the difference between births and deaths was negative and represented 15% of the variation, or specifically, -6.613 inhabitants, whereas the one corresponding to the balance between entering and leaving as part of a change of residence in our Community was positive and represented the remaining 85%, which is to say, 36,958 people.

In the latest inter-register period, between 1<sup>st</sup> May 1996 and 31<sup>st</sup> December 2005, the A.C. of the Basque Country showed an increase of 1.5% in its total population, with Álava being the Province that most increased in number, by 6.9%, Gipuzkoa did so by 0.9% and in Bizkaia the population increase was 0.4%.

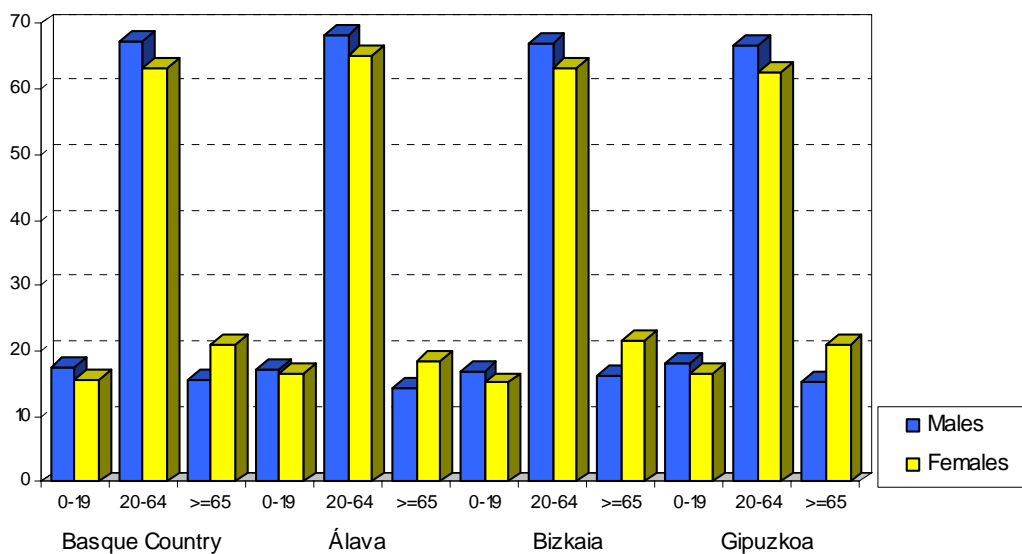
As regards the distribution of the population of the A.C. of the Basque Country by provinces on 31<sup>st</sup> December 2005, Bizkaia concentrated just over half the total numbers of the Community, 54%, while in Gipuzkoa there were 33% and in Álava the remaining 13%.

With regard to distribution by sex, of the total number of legal inhabitants of the A.C. of the Basque Country resulting from this Update, 1,045,893 were men and 1,095,015 women, meaning a female ratio of 1.05 to one, or to put it another way, there were 105 women in the Community for every 100 men. The province of Bizkaia had 106 women for every 100 men; Gipuzkoa had 104 women for every 100 men and Álava, 101 women for every 100 men.

Among those people aged 65 or over, and due to their longer life expectancy, the weight of women was much greater, 21% compared to 15% represented by men.

The population pyramid of the Community at the end of 2005 showed that 17% of the population was aged between 0 and 19, 65% were between 20 and 64 and 18% were aged 65 or over. Álava, unlike Bizkaia or Gipuzkoa, had a less aged population, given that the percentage of its elderly population was 2% lower than the Community average.

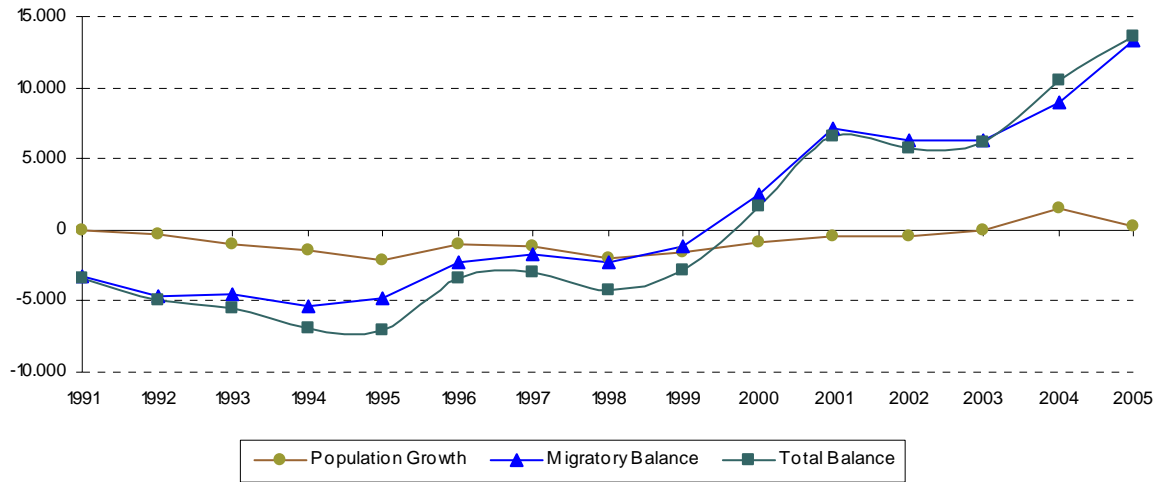
### 3. Population structure by age group, sex and province (%). 2005



Source: Eustat

However, with regard to annual variation, 2005 saw the consolidation of a rising trend that began in 2000. Following the previous Municipal Population Update (December 2004) the population of the A.C. of the Basque Country increased by 13,554 inhabitants, 0.6%, with the sum of the natural and migratory balances giving a positive result. Practically all the demographic growth of the A.C. of the Basque Country was due to migratory balance.

#### 4. Evolution of the component parts of population variation

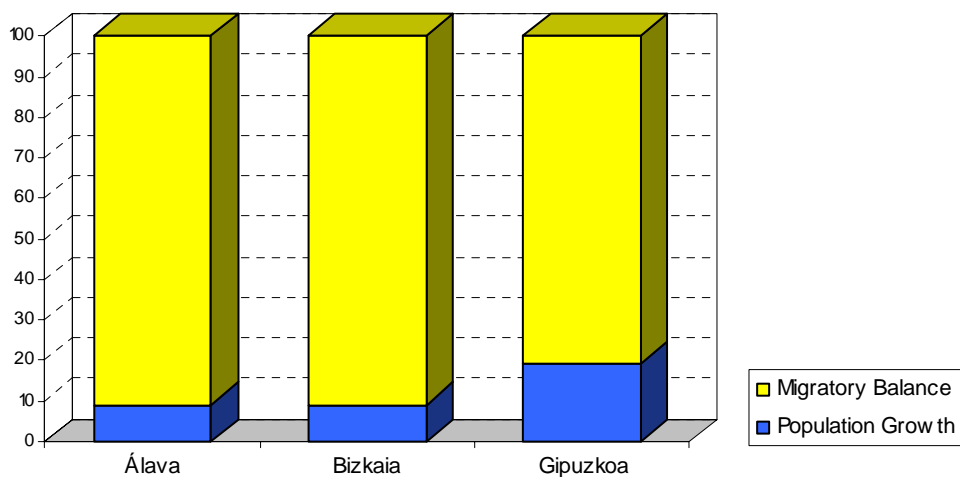


Source: Eustat

Annual variation was positive in all three provinces although slight differences could be noted as regards the composition of the variation. Álava, which gained 3,319 people, was the province with the largest relative population increase (1.1%); Bizkaia registered a rise of 6,651 inhabitants (0.6%) and Gipuzkoa with a gain of 3,582 people increased by 0.5%. The recovery of the population figures of the A.C. of the Basque Country was therefore down to the contribution of all three provinces.

This year in the three Provinces the balance between entries and exits due to migration was the determining factor in the population variation.

#### 5. Specific weight on the population variation by province (%). 2005



Source: Eustat

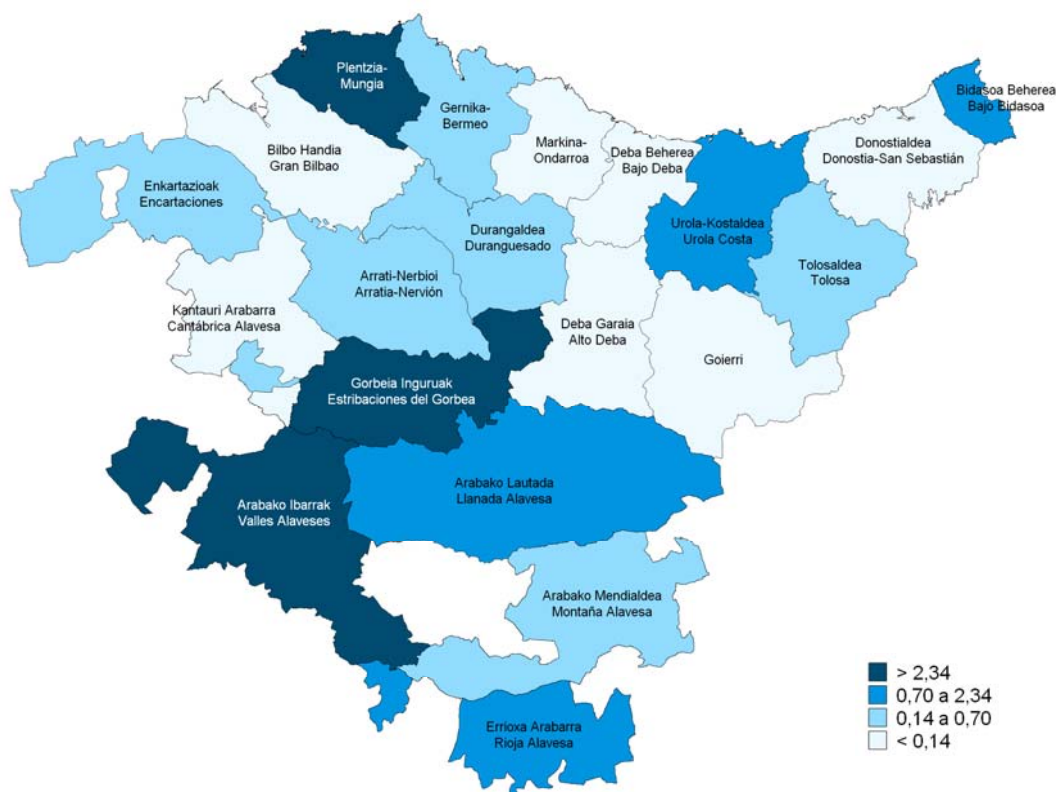
If we consider the evolution over the series of annual updates begun by **Eustat** in 1991, we can see a gradual change in the importance of the natural growth balance and the migratory balance in the inter-annual variation of the population of the A.C. of the Basque Country. Until 1999, the weight of the increasingly negative natural growth rose as regards the establishment of the total population variation, which was also negative. However, in 2000 the recovery, for the first time since 1976, of a positive migratory balance made the total balance similarly positive. Immigration contributed 98% of demographic in the A.C. of the Basque Country in 2005, as well as maintaining the positive pattern of natural growth.

## THE POPULATION OF THE DISTRICTS

Descending to district level, two-thirds of the total population of the Community were concentrated in the three districts that include the provincial capitals; thus the Llanada Alavesa contained 11% of the population of the A.C. of the Basque Country, Donostia-San Sebastián 15% and Gran Bilbao 41%.

Inter-census growth rates studied between the last Register Renewal and this Update show that fourteen of the twenty districts of our Community had positive rates. The districts with the most outstandingly positive results were Valles Alaveses, Estribaciones del Gorbea and Plentzia-Mungia, with rates of over 2%; while at the other extreme was the district of Bajo Deba whose rate was -0.5%.

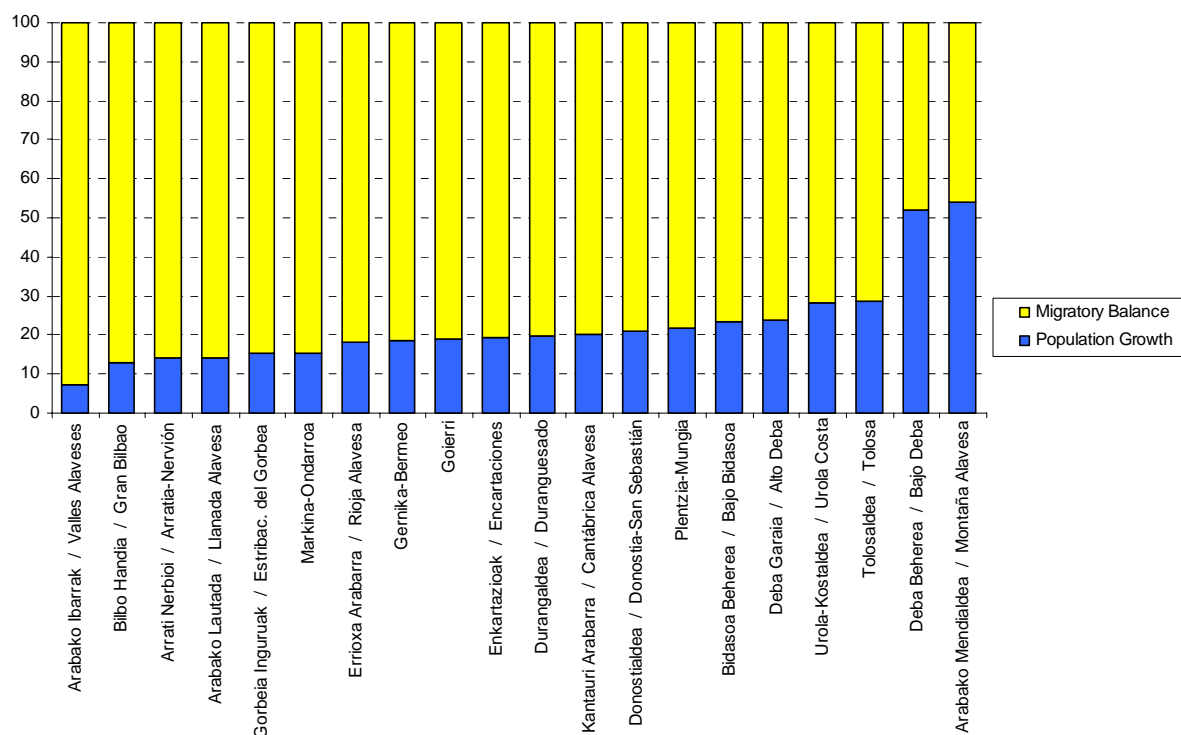
6. Inter-census growth rate by district (%). 1996-2005



Source: Eustat

Only three districts suffered population decreases following the previous Update: Montaña Alavesa, Bajo Deba and Markina-Ondarroa. Overall, they lost 143 inhabitants (-0.25%). The remaining districts underwent population growth, gaining 13,697 people, or 0.7% of their population.

### 7. Specific weight of the component parts of the population variation by district (%). 2005



Source: Eustat

As regards the pattern of the components of the population variation, all the districts with population increases registered positive migratory balances, even though the balance between births and deaths was not always positive, as was the case of Valles Alaveses, Arratia-Nervión, Gran Bilbao, Alto Deba, Encartaciones, Rioja Alavesa, Gernika-Bermeo and Cantábrica Alavesa. Even all the districts with a population loss registered positive migratory balances, except for Markina-Ondarroa.

### THE POPULATION OF THE MUNICIPALITIES

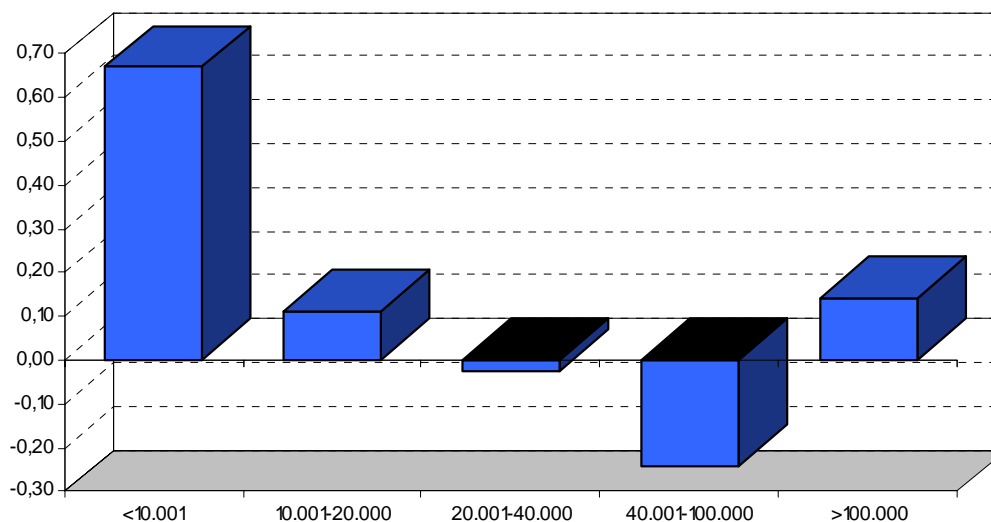
Of the 250 municipalities that make up the A.C. of the Basque Country, 82 showed negative intercensus growth rates, which is to say that following the last Register Renewal dated 1<sup>st</sup> May 1996 their numbers of inhabitants decreased and 169 saw them increase.

The municipalities were grouped into the following five categories:

1. large municipalities: over 100,000 inhabitants,
2. medium-sized municipalities: 40,001-100,000 inhabitants,
3. intermediate municipalities: 20,001-40,000 inhabitants,
4. intermediate municipalities: 10,001-20,000 inhabitants,
5. small municipalities: less than 10,001 inhabitants.

There were population increases in municipalities with less than 20,000 inhabitants and those with over 100,000 inhabitants following the previous Register Renewal of 1st May 1996. In the intermediate categories, including municipalities between 20,001 and 100,000 inhabitants there were population decreases.

### 8. Inter-census growth rate by size of municipality (%). 1996-2005

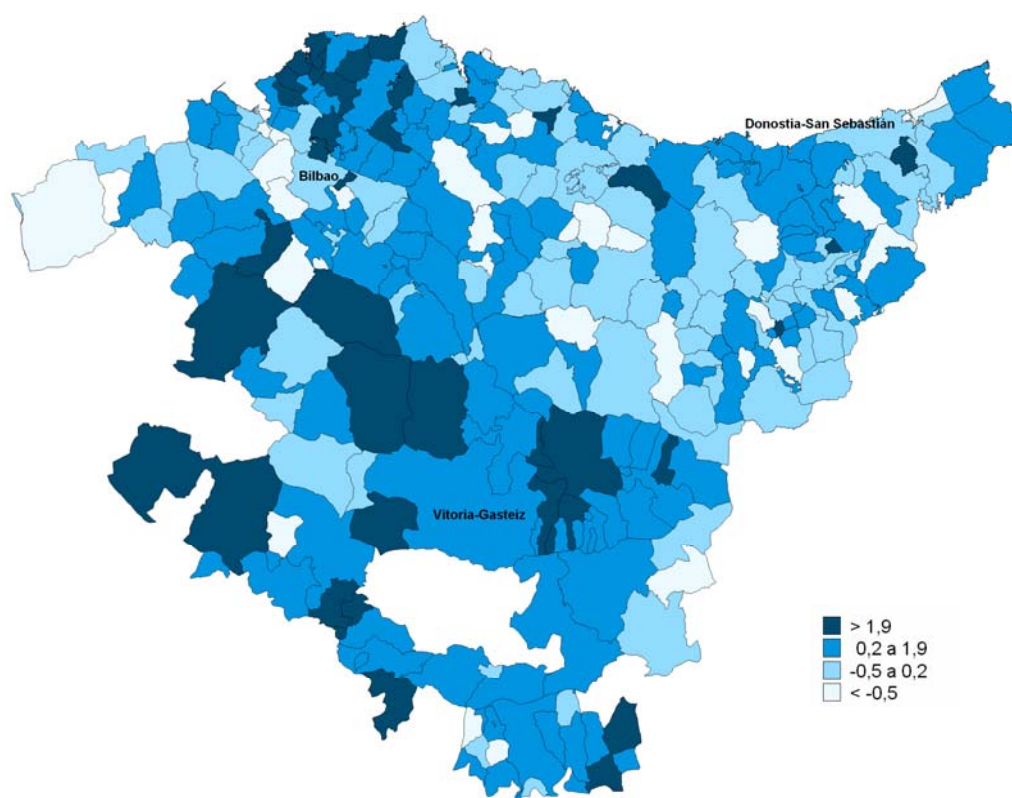


Source: Eustat

In relative terms, the category that brought together medium-sized municipalities (between 40,001 and 100,000 inhabitants) was the one with the largest percentage decreases and the most pronounced negative inter-census growth rate. As for the municipalities with the smallest populations, together with the three capitals that make up the category with over 100,000 inhabitants, they had better results with population increases.

Below we will look at each of the categories separately. However, it should be pointed out that the municipalities of the A.C. of the Basque Country that experienced the largest absolute increases in population during 2005 were the three Basque capitals: Vitoria-Gasteiz with an increase of 2,014 people, Bilbao which gained 1,667 people, and Donostia-San Sebastián with 833 more people. Also outstanding among the intermediate-sized categories were the increases for the municipalities of Irún (585), Leioa (408), Getxo (345) and Durango, with 297 more inhabitants than in 2004.

## 9. Inter-census growth rate by municipality (%). 1996-2005



Source: Eustat

On the other hand, those with the greatest absolute decreases in their population during 2005 were Portugalete, which lost 335 inhabitants, followed by Arrasate/Mondragón with a loss of 229 inhabitants, Eibar, which lost 164 inhabitants and Sestao with a loss of 121 inhabitants.

As for the relative variation, the municipalities with more than ten thousand inhabitants which experienced an annual increase of more than 1% were Arrigorriaga (1.7%), Munguía (1.5%), Leioa (1.2%), Vitoria-Gasteiz, Durango (1.2%); on the other hand, the greatest relative annual population decreases of more than -0.8% were among the municipalities of Sestao (-1.2%), Pasaia (-1.2%) Portugalete (-0.9%), Eibar (-1%), Ondarroa (-0.8%) and Arrasate/Mondragón (-0.8%).

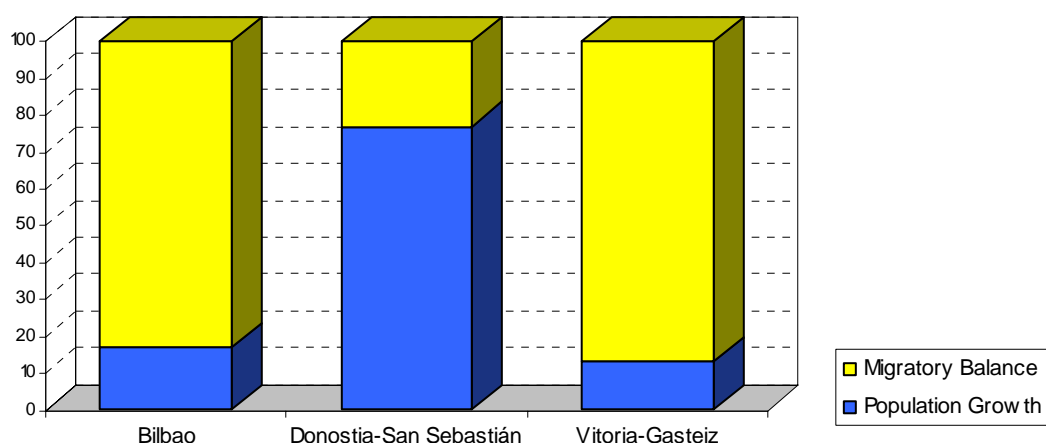
Those with the highest natural growth following the last Municipal Population Update were the capital of the province of Álava (+352), the municipality of Irún in Gipuzkoa (+176) and the municipality of Leioa in Bizkaia (+141). Meanwhile, the municipalities with the highest positive migratory balance in 2005 were Bilbao (+3.303), Vitoria-Gasteiz (+2.260), Irún (+568) and Getxo (+477).

### The large municipalities

The capitals of the provinces are the only three municipalities with a population of more than 100,000 inhabitants and concentrate around 36% of the total population of the Community. The inter-census growth rates were positive in Vitoria-Gasteiz (0.6%) and in Donostia-San Sebastián (0.04%), whereas it was negative in Bilbao (-0,05%).

Following the previous Population Update, the joint annual variation of this group of municipalities stood at 0.9%. Vitoria-Gasteiz and Bilbao increased their population by 2,612 (1.2%) and 2,605 (0.7%) inhabitants respectively. Results were quite different for Donostia-San Sebastián, whose population reduced by 159 inhabitants, which is to say 0.1% in 2005.

#### 10. Specific weight of the component parts of the population by municipality (>100,000 Inhabs.) (%). 2005



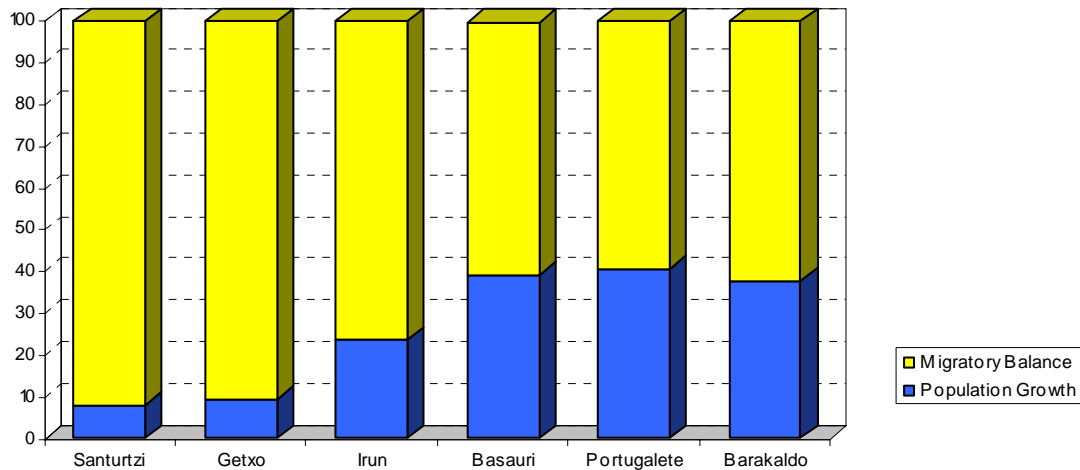
Source: Eustat

During 2005 Bilbao and Vitoria-Gasteiz, the capitals to gain in population did so thanks to the migratory balance, whereas in Donostia-San Sebastián the negative component of natural growth had a greater impact.

### The medium-sized municipalities

In the A.C. of the Basque Country there are six municipalities whose population stands at between 40,001 and 100,000 inhabitants, accounting for 18% of the total population of the Community. Their inter-census growth rates were negative: Barakaldo (-0.4%), Basauri (-0.7%), Portugalete (-1%) and Santurtzi (-0,4%). In Bizkaia there was positive growth for Getxo, whose rate was 0.2%, and in Gipuzkoa, Irún, with a rate of 0.8%.

**11. Specific weight of the component parts of the population by municipality  
(40,001-100,000 inhabs.) (%). 2005**



Source: Eustat

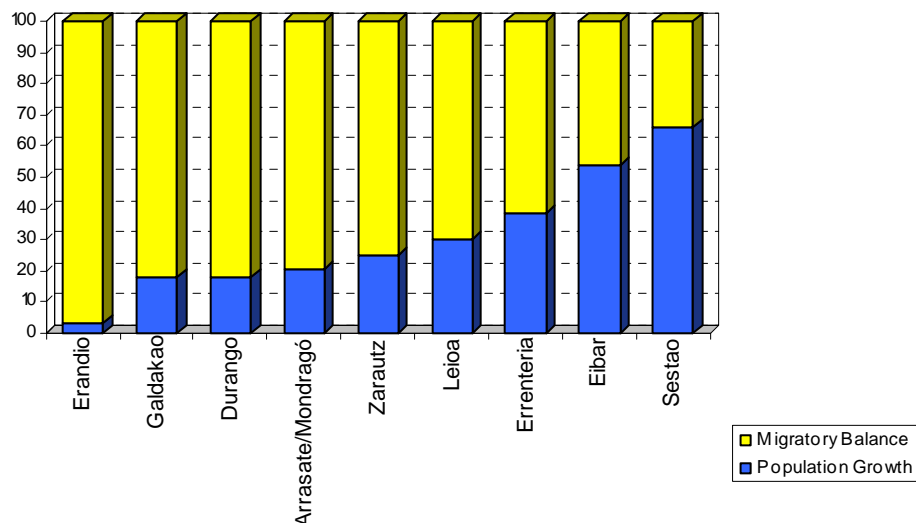
As for the most recent variation, the group of municipalities included in this category gained 1,164 inhabitants and its rhythm of global annual variation was 0.15%.

In all the municipalities that make up this group, the population variation was clearly determined by the migratory balance.

***The intermediate municipalities***

The nine municipalities whose population stands at between 20,001 and 40,000 inhabitants, represented 12% of the total population of the Community. Positive inter-census growth rates were experienced by: Durango (1.2%), Leioa (1.2%) and Zarautz (1.5%).

**12. Specific weight of the component parts of the population by municipality  
(20,001-40,000 Inhabs.) (%). 2005**



Source: Eustat

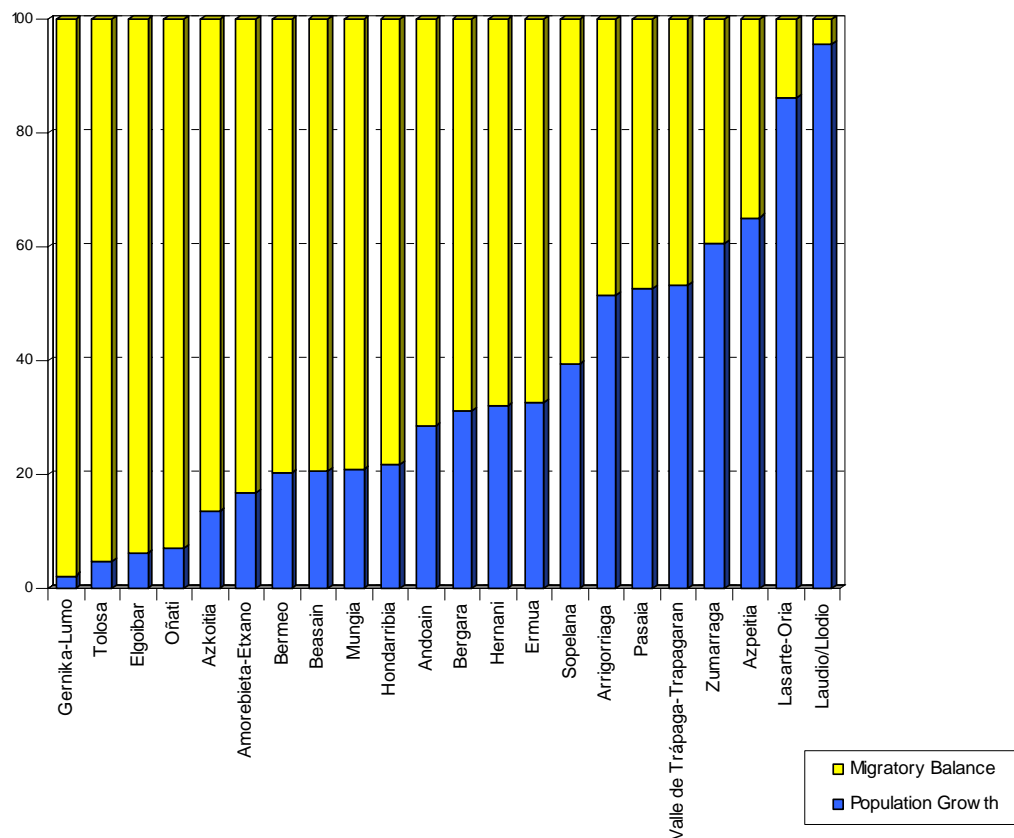
These are the same municipalities that registered increased in population figures following the last Update. On the other hand, Arrasate/Mondragón, Eibar, Errenteria, Sestao and Erandio suffered absolute losses in the number of inhabitants, especially Sestao with the highest relative decrease, above 1%. The joint annual variation of this category of municipalities was 0.7%. In the majority of the municipalities that make up this group the variation was basically due to migratory balance, whereas in Eibar and Sestao the weight of natural growth made a greater impact.

15% of the population of the A.C. of the Basque Country resided in a total of 22 municipalities whose population was between 10,001 and 20,000 inhabitants. The municipality of Pasaia stood out for its negative inter-census growth rate of less than -1.2%, while there were positive rates of over 1% for Sopelana (2.3%), Arrigorriaga (1.7%), Mungia (1.5%) and Hondarribia (1%).

This category of municipalities gained 2,204 inhabitants overall, making its joint annual variation 0.4%. Eleven municipalities within the category increased their population and obtained a rise of 1,714 inhabitants, representing 0.7% of its population, while the eleven municipalities that decreased lost 252 inhabitants, which is to say, 0.7%.

In the majority of municipalities included in this category, the population variation was determined by migratory balance, although this was not the case in the municipalities of Laudio/Llodio and Lasarte-Oria in which natural growth was the determining factor in population variation. In the municipalities of Azkoitia, Valle de Trápaga-Trapagarán, Arrigorriaga and Pasaia it was shared.

### 13. Specific weight of the component parts of the population by municipality (10,001-20,000 Inhabs.) (%). 2005



Source: Eustat

### ***The small municipalities***

Finally, the 210 remaining municipalities with less than 10,001 inhabitants brought together 19.5% of the total population of the Community. Of these, 150 had positive inter-census growth rates and 60 of them were negative. Among the municipalities with over a thousand inhabitants, most notable were the positive rates of more than 3%, Zuia (4.9%) in Álava, Irura (4.6%) in Gipuzkoa, and Loiu (3.8%), Bakio (3.7%) and Gorniz (3.5%) in Bizkaia.

The group of municipalities with less than 10,000 inhabitants gained 3,915 inhabitants. Of this group of municipalities, the ones whose population rose obtained an increase of 4,513 inhabitants, which is to say, 1.3% of its population, while the group of those that decreased lost 598 inhabitants, 1% of their original population.

In nine out of ten of these municipalities the population variation was due to migratory balance, whereas in the remaining one, the population variation was determined by negative natural growth.