



# Municipal population update

## Results analysis

## INDEX

<b>HISTORICAL APPROXIMATION</b>	<b>2</b>
<b>THE POPULATION OF THE A.C. OF THE BASQUE COUNTRY</b>	<b>4</b>
<b>MUNICIPALITY POPULATION</b>	<b>8</b>
<b>Large municipalities</b>	<b>11</b>
<b>Medium-sized municipalities</b>	<b>11</b>
<b>Intermediate municipalities</b>	<b>12</b>
<b>Small municipalities</b>	<b>14</b>

## MUNICIPAL POPULATION UPDATE

The Municipal Population Update offers annual continuity to the population figures provided by Censuses and, until 1996, Municipal Register Renewals. In addition, it lets us compare the intensity of demographic phenomena -natural and migratory- as regards their contribution to the numerical variations of the population of the Autonomous Community of the Basque Country in various territorial areas: province, district and municipality.

The intention therefore is to provide annually updated data on the lawful population of the municipalities of the Autonomous Community of the Basque Country in inter-register periods, using the reference date of 31<sup>st</sup> December every year. As regards its content, the website offers population figures and a breakdown of the component parts of the population variation, by province, district and municipality, as well as the structure of the population by sex and age at provincial level.

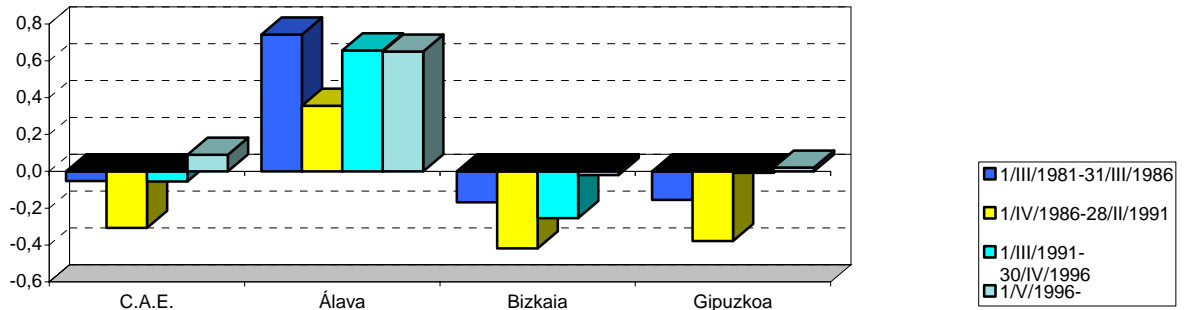
In order to make the interpretation of this analysis clearer, it should be pointed out that the pattern followed here tackles population changes in terms of size of population centre, going from larger to smaller: A.C. of the Basque Country, provinces, districts and finally, municipalities grouped together according to size.

Following an initial historical approximation by means of the Censuses and Register Renewals of 1981, 1986, 1991 and 1996, the temporal coverage considered in the analysis takes in two reference dates: on the one hand, the inter-census period stretching from May 1<sup>st</sup> 1996 to the Population Update in question dated 31<sup>st</sup> December 2004 and on the other, the annual variation since the last Population Update published by **Eustat**.

### **HISTORICAL APPROXIMATION**

The evolution of the major population figures shows the downward trend of the population that began in our Community at the beginning of the 80s to be levelling off. The inter-census growth rate of the A.C. of the Basque Country –which indicates the average annual percentage variation in the population since the last Register Renewal- changed course recently. In the first three inter-register periods analysed (1981-1986, 1986-1991 and 1991-1996), the rates fluctuated between –0.1% and -0.3%. In the most recent inter-register period, between 1<sup>st</sup> May 1996 and December 2004, it stood at 0.09%.

1. Evolution of the inter-census growth rate by province (%)

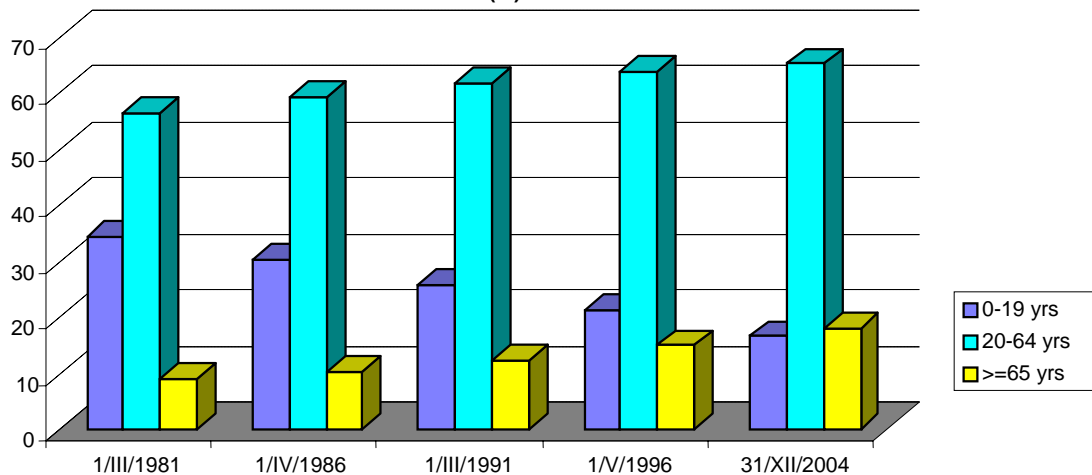


Source: Eustat

Between 1981 and the end of 2004, the A.C. of the Basque Country registered a loss of 26,963 people, which is to say 1.3% of its population. Álava was the only province with uninterrupted population increases, showing an increase in numbers for every inter-census period analysed and gaining 40,239 people between 1981 and December 2004, a rise of 15.6%. Over the same period the populations of Bizkaia and Gipuzkoa diminished, especially Bizkaia with a loss of 51,453 people, representing 4.3% of its total population. As for Gipuzkoa, over this time it lost 15,751 inhabitants, which is to say about 2.3% of its population.

As regards the population structure of the A.C. of the Basque Country, the evolution of distribution by the major age groups showed a pronounced and continuous fall in numbers among the youngest age groups, whereas at the same time, the most senior ones increased. Between 1981 and 2004 the population of the Community aged between 0 and 19 fell from 34% to 17%, while during the same time, the population aged 65 and over doubled in number, going from 9% to 18%

2. Evolution of the population structure of the A.C. of the Basque Country by age groups (%)



Source: Eustat

## **THE POPULATION OF THE A.C. OF THE BASQUE COUNTRY**

According to the most recent Register Renewal from 1<sup>st</sup> May 1996, the A.C. of the Basque Country had 2,098,055 inhabitants. This initial figure was corrected by successive modifications produced during the inter-register period and errors intrinsic to any Register Renewal (generally undervaluing) as well as errors in the subsequent register process. In this respect, before 31<sup>st</sup> December 2004 there were 35,006 omissions and 21,051 duplicates and incorrect inclusions, so that the real population on the date of this Renewal came to 2,112,010 inhabitants.

Using this corrected figure, the population update is carried out using basic demographic components: natural population growth and migratory balance. Between the Register Renewal of 1/5/96 and the Population Update of 31/12/04, the A.C. of the Basque Country underwent an increase of 16,791 people, with the total reaching 2,128,801 inhabitants. In this inter-register period, the population variation taken from the difference between births and deaths was negative and represented 23% of the variation, or -6,903 inhabitants, whereas the one corresponding to the balance between entering and leaving as part of a change of residence in our Community was positive and represented the remaining 77%, which is to say 23,694 people.

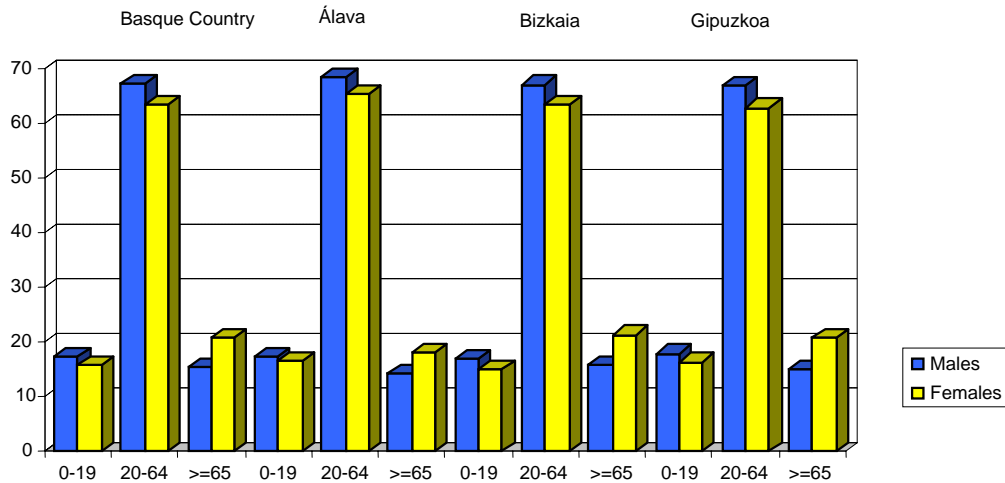
In the latest inter-register period, between 1<sup>st</sup> May 1996 and 31<sup>st</sup> December 2004, the A.C. of the Basque Country showed an increase of 0.8% in its total population. Álava increased in numbers by 5.7%, while the population of the other two Provinces remained practically unchanged: Gipuzkoa increased by 0.4% and Bizkaia lost 0.2% of its population.

As regards the distribution of the population of the A.C. of the Basque Country by provinces on 31<sup>st</sup> December 2004, Bizkaia concentrated just over half the total numbers of the Community, 54%, while in Gipuzkoa there were 32% and the remaining 14% were in Álava.

With regard to distribution by sex, of the total number of lawful inhabitants of the A.C. of the Basque Country resulting from this Update, 1,040,746 were men and 1,088,055 were women, meaning a female ratio of 1.05 to one, or to put it another way, there were 105 women in the Community for every 100 men. The province of Bizkaia had 106 women for every 100 men; Gipuzkoa had 104 women for every 100 men and Álava, 101 women for every 100 men.

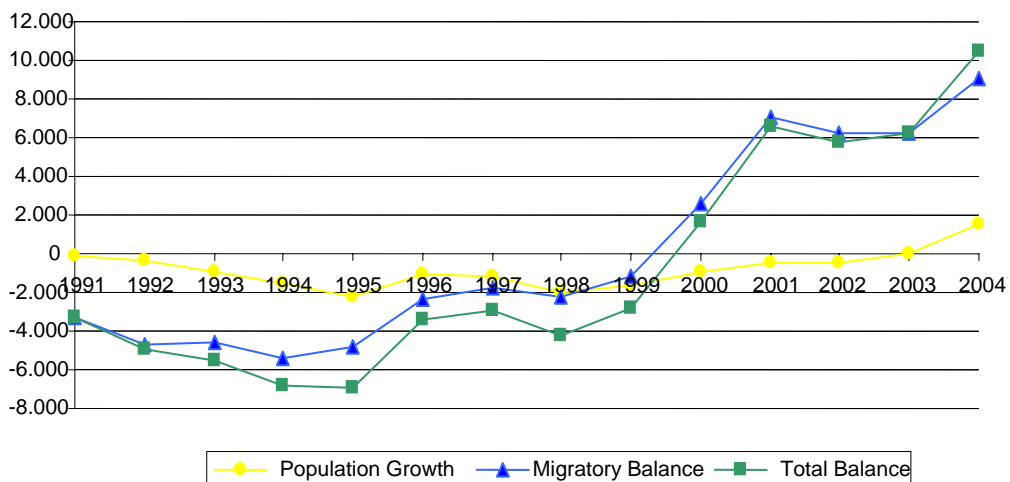
Among people aged 65 or over, and due to their longer life expectancy, the weight of women was much greater, 21% compared to 15% represented by men.

The population pyramid of the Community at the end of 2004 showed that 17% of the population was aged between 0 and 19, 65% were between 20 and 64 and 18% were aged 65 or over. Álava, unlike Bizkaia or Gipuzkoa, had a less aged population, given that the percentage of its elderly population was 2% lower than the Community average.

**3. Population structure by age groups, sex & province (%) 2004**


Source: Eustat

However, with regard to annual variation, 2004 saw the consolidation of a rising trend that began in 2000. Following the previous Municipal Population Update (December 2003) the population of the A.C. of the Basque Country increased by 9,934 inhabitants, 0.5%, with the sum of the natural and migratory balances giving a positive result. Practically all the demographic growth of the A.C. of the Basque Country was due to migratory balance.

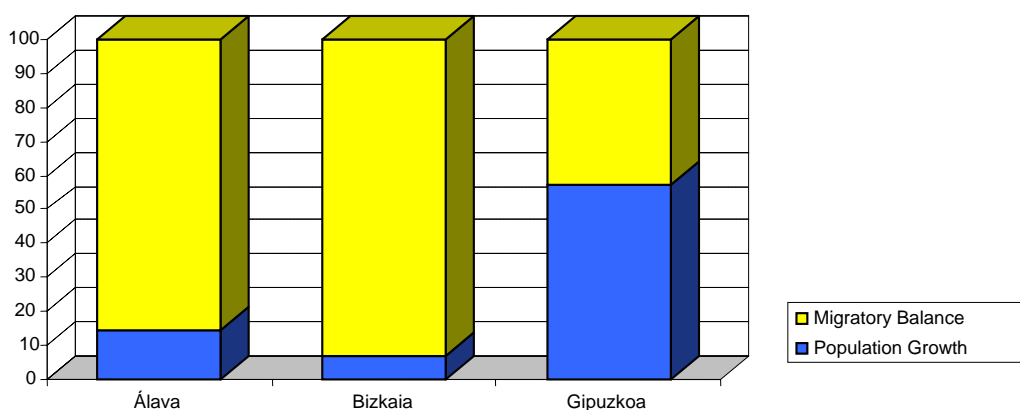
**4. Evolution of population variation components**


Source: Eustat

The annual variation was positive in all three provinces although slight differences could be noted as regards the composition of the variation. Álava, which gained 3,702 people, was the province with the largest relative population increase (1.2%); Bizkaia registered an increase of 4,888 inhabitants (0.4%) and the population of Gipuzkoa, with a gain of 1.343 people, increased by 0.2%. The recovery of the population figures of the A.C. of the Basque Country was therefore down to the contribution of all three provinces.

While in Álava and Bizkaia the balance between entering and leaving because of migration was the determining factor in population variation, in Gipuzkoa the variation was determined during 2004 by the difference between births and deaths.

#### 5. Specific weight of population variation by province (%). 2004



Source: Eustat

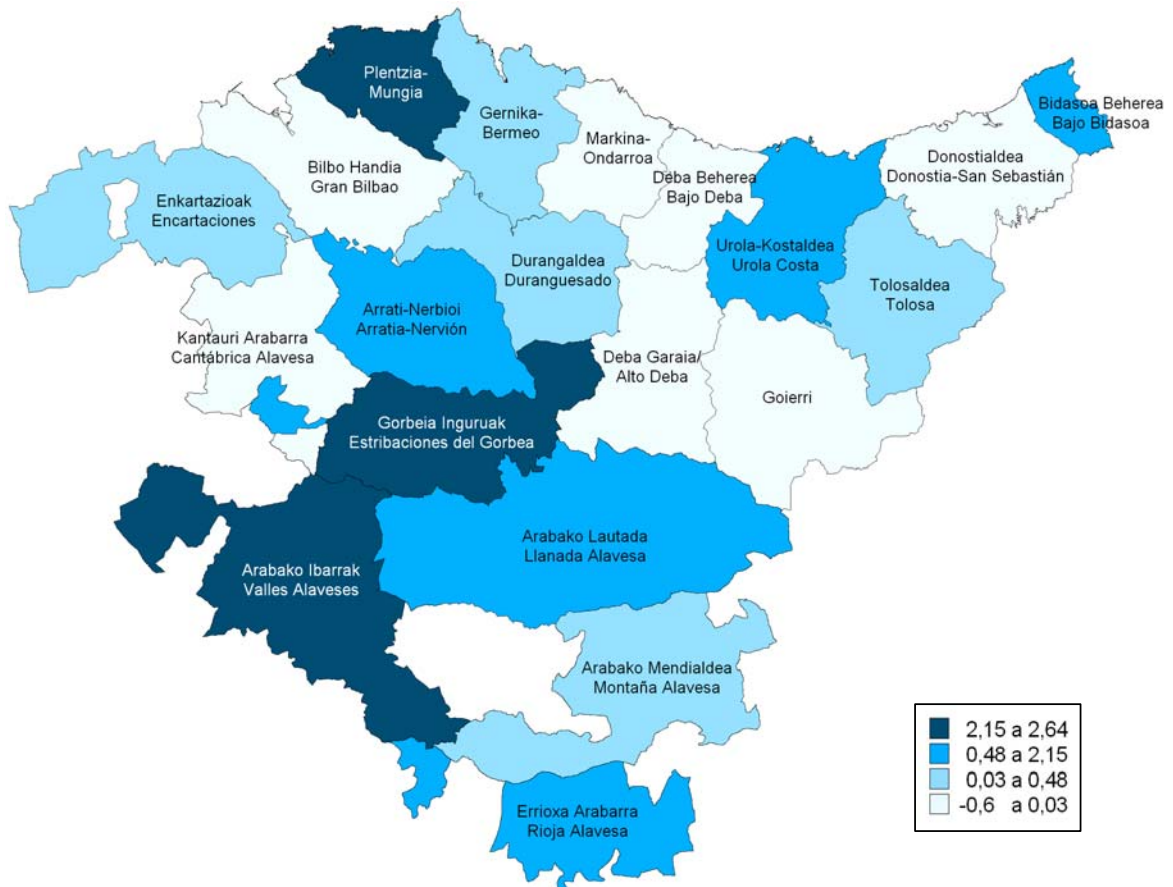
If we consider the evolution over the series of annual updates begun by **Eustat** in 1991, we can see a gradual change in the importance of the natural growth balance and the migratory balance in the inter-annual variation of the population of the A.C. of the Basque Country. Until 1999, the weight of the rising negative natural growth increased as regards the establishment of the total population variation, which was also negative. However, in 2000 the recovery, for the first time since 1976, of a positive migratory balance made the total balance similarly positive. The demographic growth of the A.C. of the Basque Country was mainly due to increased immigration, but in 2004 the trend changed and the natural balance became positive once more, contributing 9% to the inter.-annual population variation.

#### DISTRICT POPULATION

Descending to district level, two-thirds of the total population of the Community were concentrated in the three districts that include the provincial capitals; thus the Llanada Alavesa contained 11% of the population of the A.C. of the Basque Country, Donostia-San Sebastián 15% and Gran Bilbao 41%.

Inter-census growth rates studied between the last Register Renewal and this Update show that thirteen of the twenty districts of our Community had positive rates. The districts with the most outstandingly positive results were Valles Alaveses, Etribaciones del Gorbea and Plentzia-Mungia, with rates of over 2%; while at the other extreme was the district of Bajo Deba whose rate was close to -1%.

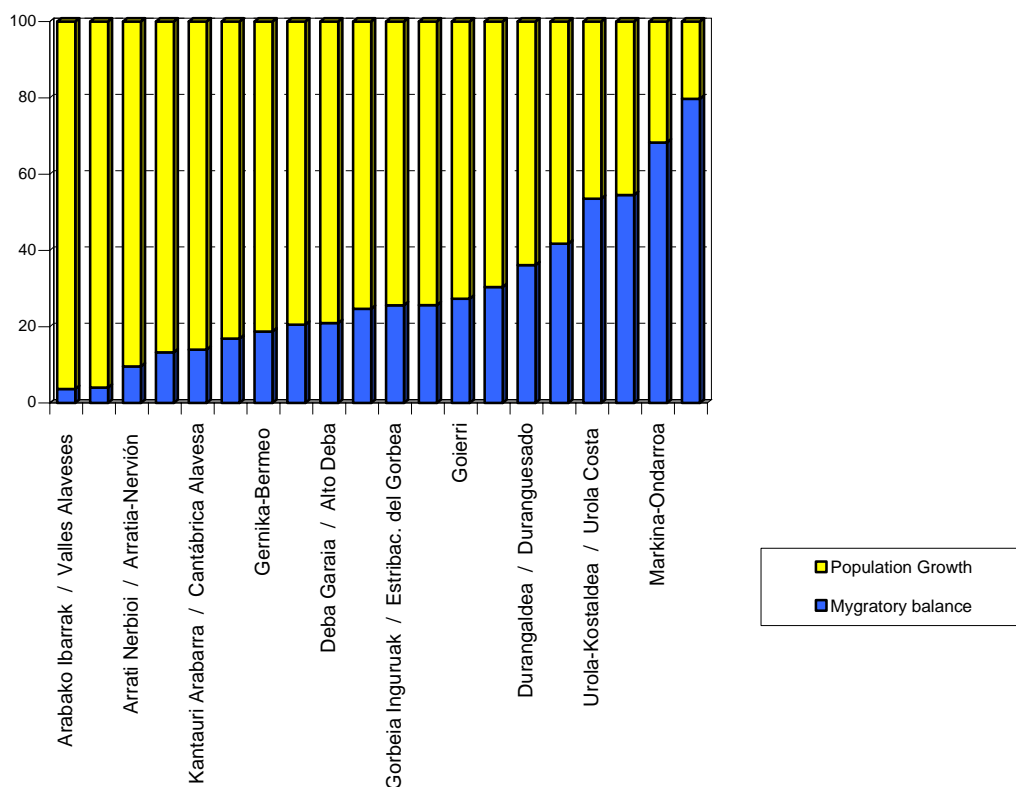
6. Inter-census growth rate by district (%). 1996-2004



Source: Eustat

Only four districts suffered population decreases following the previous Update: Bajo Deba, Alto Deba, Donostia-San Sebastián and Markina-Ondarroa. Overall, they lost 414 inhabitants (0.1%). The remaining districts experienced population growth, gaining 10,347 people or 0.6% of their population.

## 7. Specific weight of the variation components of the population by district (%). 2004



Source: Eustat

As regards the pattern of the components of the population variation, all the districts with population increases registered positive migratory balances, even though the balance between births and deaths was not always positive, as was the case of Valles Alaveses, Montaña Alaveses, Arratia-Nervión, Gran Bilbao, Encartaciones, Rioja Alaveses and Gernika-Bermeo. Meanwhile, apart for the district of Markina-Ondarroa, all the others with a population loss registered negative migratory balances.

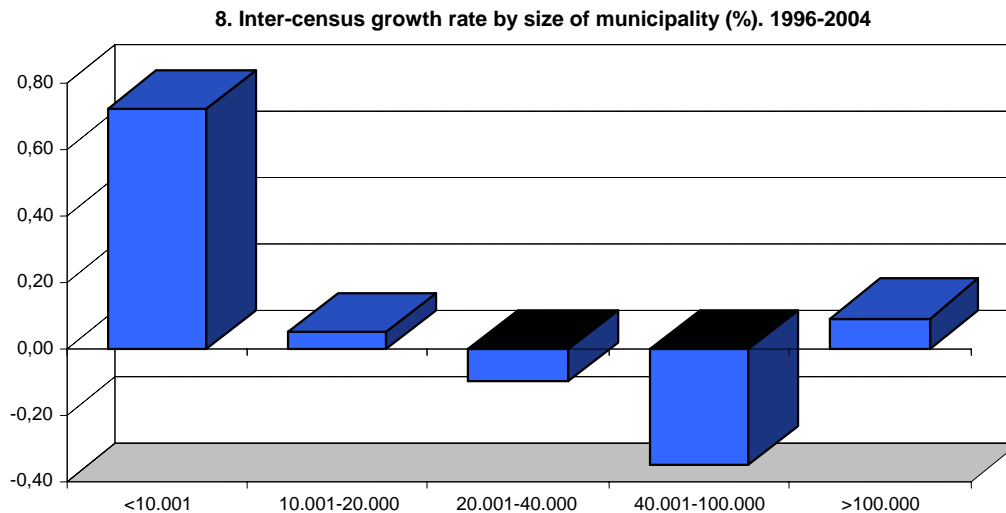
## MUNICIPALITY POPULATION

Of the 250 municipalities that make up the A.C. of the Basque Country, 87 showed negative intercensus growth rates, which is to say that following the last Register Renewal dated 1<sup>st</sup> May 1996 their numbers of inhabitants decreased, one maintained the same population figures and 163 saw them increase.

The municipalities were grouped into the following five categories:

1. large municipalities: over 100,000 inhabitants,
2. medium-sized municipalities: 40,001-100,000 inhabitants,
3. intermediate municipalities: 20,001-40,000 inhabitants,
4. intermediate municipalities: 10,001-20,000 inhabitants,
5. small municipalities: less than 10,001 inhabitants.

There were population increases in municipalities with less than 20,000 inhabitants and those with over 100,000 inhabitants following the previous Register Renewal of 1st May 1996. In the intermediate categories, including municipalities between 20,001 and 100,000 inhabitants there were population decreases.

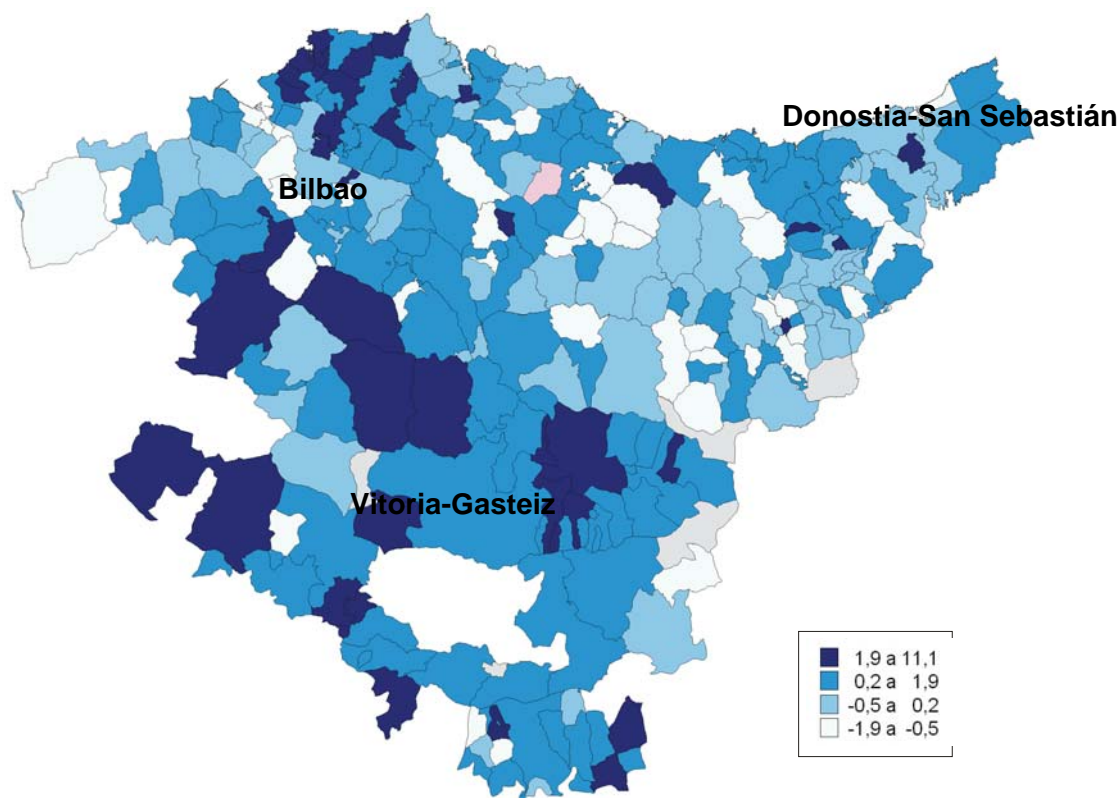


Source: Eustat

In relative terms, the category that brought together medium-sized municipalities (between 40,001 and 100,000 inhabitants) was the one with the largest percentage decreases and the most pronounced negative inter-census growth rate. As for the municipalities with the smallest populations, together with the three capitals that make up the category with over 100,000 inhabitants, they had better results with population increases.

Below we will look at each of the categories separately. However, it should be pointed out that the municipalities of the A.C. of the Basque Country that experienced the largest absolute increases in population during 2004 were the three Basque capitals: Vitoria-Gasteiz with an increase of 2,463 people, Bilbao which gained 1,394 people, and Donostia-San Sebastián with 498 more people. Also outstanding among the intermediate-sized categories were the increases for the municipalities of Durango (297), Mungia (229) and Leioa with 203 more inhabitants than in December 2003.

## 9. Inter-census growth rates by municipality (%). 1996-2004



Source: Eustat

On the other hand, those with the greatest absolute decreases in their population during 2004 were Portugalete, which lost 371 inhabitants, followed by Sestao, with a loss of 325 inhabitants, Eibar, which lost 194 inhabitants, Ondarroa, with 176 less people and Errenteria, with a loss of 146 inhabitants.

As for the relative variation, the municipalities with more than ten thousand inhabitants which experienced an annual increase of more than 1% were Gernika-Lumo (1.7%), Pasaia (1.6%), Arrigorriaga (1.4%), Leioa (1.3%), Vitoria-Gasteiz (1.3%) and Durango (1.2%); on the other hand, the greatest relative annual population decreases of more than -0.5% were among the municipalities of Portugalete (-0.8%), Ermua (-0.7%), Arrasate/Mondragón (-0.6%), Eibar (-0.6%) and Sestao (-0.5%).

Those with the highest natural growth following the last Municipal Population Update were the capital of the province of Álava (+471), the municipality of Irún in Gipuzkoa (+139) and the municipality of

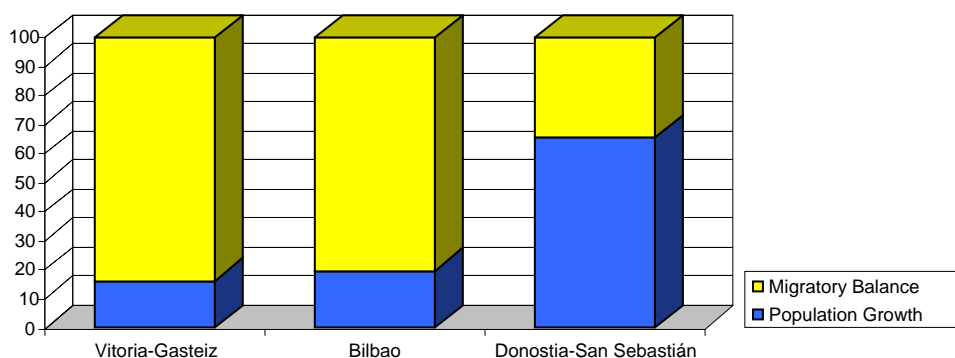
Leioa in Bizkaia (+110). Meanwhile, the municipalities with the highest positive migratory balance in 2004 were Bilbao (+2,747), Vitoria-Gasteiz (+2,402) and Irún (+445).

### Large municipalities

The capitals of the provinces are the only three municipalities with a population of more than 100,000 inhabitants and concentrate around 36% of the total population of the Community. The inter-census growth rates were positive in Donostia-San Sebastián (0.03%) and in Vitoria-Gasteiz (0.6%) whereas it was negative in Bilbao (-0.2%).

Following the previous Population Update, the joint annual variation of this group of municipalities stood at 0.6%. The population of Bilbao and Vitoria-Gasteiz increased by 2,071 (0.6%) and 2,873 (1.3%) inhabitants respectively. Results were quite different for Donostia-San Sebastián, whose population reduced by 242 inhabitants, which is to say 0.1% in 2004.

10. Specific weights of the population variation components by province (>100.000 Inhab.) (%). 2004



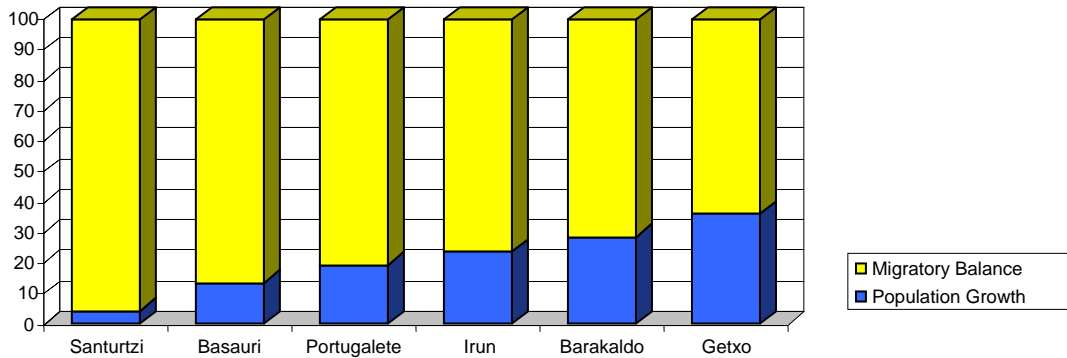
Source: Eustat

During 2004, Bilbao and Vitoria-Gasteiz, the capitals to gain in population did so thanks to the migratory balance, whereas in Donostia-San Sebastián natural growth had a greater impact and both negative components reaffirmed the population decrease.

### Medium-sized municipalities

In the A.C. of the Basque Country there are six municipalities whose population stands at between 40,001 and 100,000 inhabitants, accounting for 18% of the total population of the Community. Their inter-census growth rates were negative: Barakaldo (-0.6%), Basauri (-0.8%), Portugalete (-1%) and Santurtzi (-0.6%). In Bizkaia there was positive growth for Getxo, whose rate was 0.2%, and in Gipuzkoa, Irún, with a rate of 0.8%.

**11. Specific weight of the population variation components by municipality (40.001-100.000 Inhab.) (%). 2004**



Source: Eustat

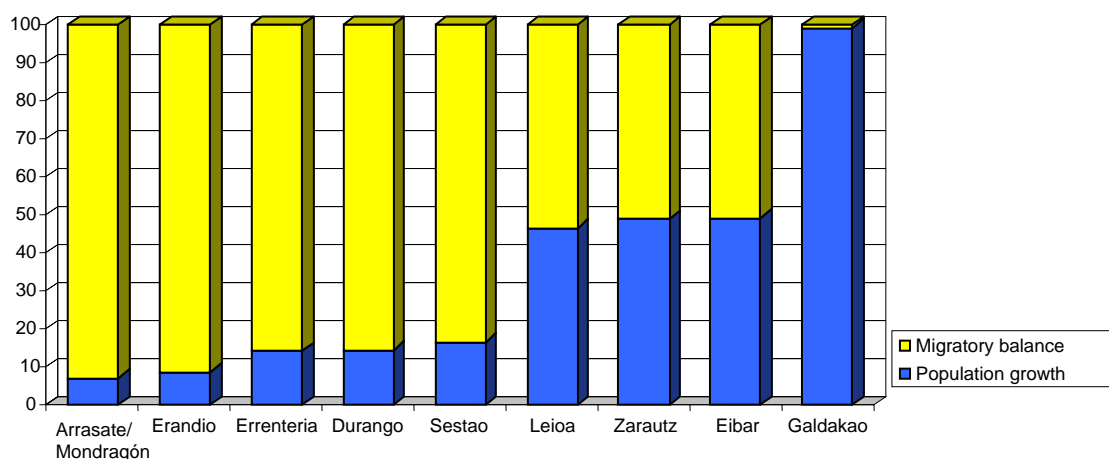
As for the most recent variation, the group of municipalities included in this category gained 420 inhabitants and its global annual variation was 0.1%.

In all the municipalities that make up this group, the population variation was clearly determined by the migratory balance.

### *Intermediate municipalities*

The nine municipalities whose population stands at between 20,001 and 40,000 inhabitants, represented 12% of the total population of the Community. Positive inter-census growth rates were experienced by Durango (1.2%), Leioa (1.2%) and Zarautz (1.5%).

**12. Specific weight of population variation components by municipality (20.001-40.000 Inhab.) (%). 2004**



Source: Eustat

These municipalities, as well as Erandio and Galdakao, registered increases in their population figures following the previous Update. On the other hand, Arrasate/Mondragón, Eibar, Errenteria and

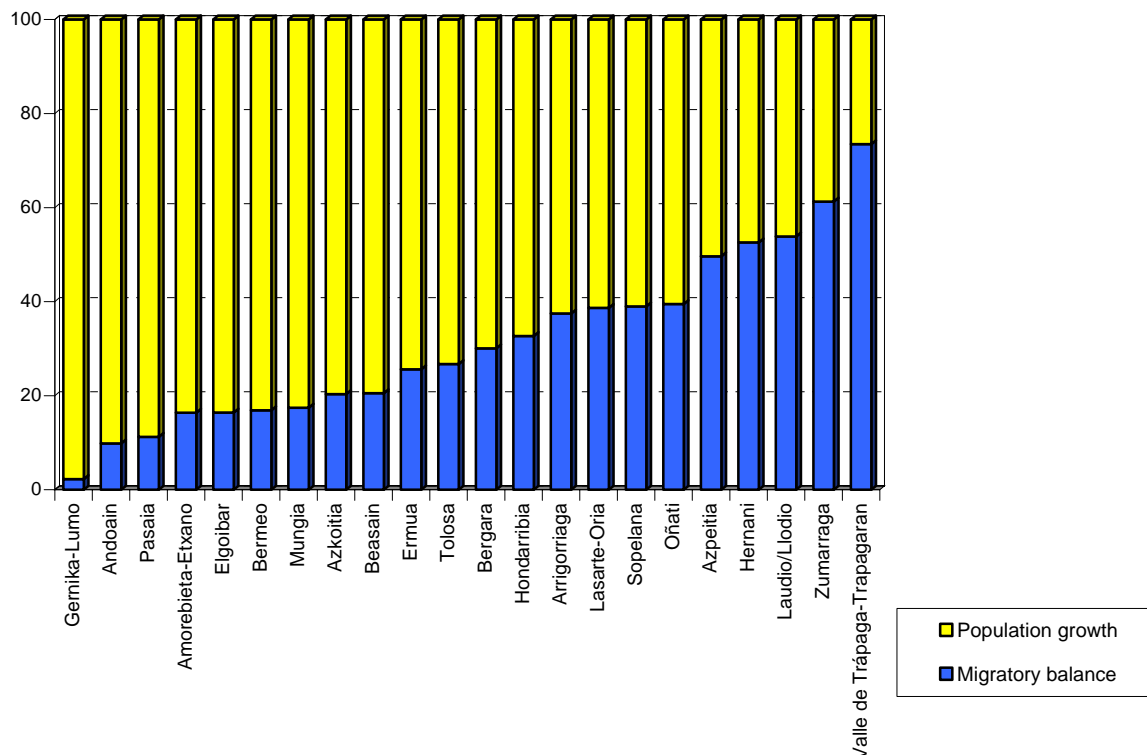
Sestao suffered absolute losses in the number of inhabitants, especially Sestao with the highest relative decrease, above 1%. The joint annual variation of this category of municipalities was 0.2%. In over half the municipalities that make up this group, the variation was basically due to migratory balance, while Eibar, Zarautz and Leioa there was an even balance between natural growth and migratory balance. Galdakao, on the other hand stood out for its variation being completely due to natural growth.

15% of the population of the A.C. of the Basque Country resided in a total of 22 municipalities whose population was between 10,001 and 20,000 inhabitants. The municipality of Pasaia stood out for its negative inter-census growth rate of less than -1.3%, while there were positive rates of over 1% for Sopelana (2.4%), Arrigorriaga (1.8%), Mungia (1.4%) and Hondarribia (1%).

This category of municipalities gained 1,461 inhabitants overall, making its joint annual variation 0.4%. Eleven municipalities within the category increased their population and obtained a rise of 1,714 inhabitants, representing 0.7% of its population, while the eleven municipalities that decreased lost 252 inhabitants, which is to say 0.4%.

In the majority of municipalities included in this category, the population variation was determined by migratory balance, although this was not the case in the municipalities of Hernani, Llodio/Llodio, Zumárraga and Valle de Trápaga-Trapagaran, in which natural growth had greater weight in the population variation.

13. Specific weight of population variation components by municipality (10.001-20.000 inhabs.) (%). 2004



Source: Eustat

### ***Small municipalities***

Finally, the 210 remaining municipalities with less than 10,001 inhabitants brought together 19.5% of the total population of the Community. Of these, 142 had positive inter-census growth rates and 68 of them were negative. Among the municipalities with over a thousand inhabitants, most notable were the positive rates of more than 3%, *Alegría-Dulantzi* (5.6%), *Zuia* (5.3%) and *Okondo* (3.1%) in *Álava*, *Irura* (4.7%) in *Gipuzkoa* and *Loiu* (3.9%), *Bakio* (3.8%) and *Gorliz* (3.7%) in *Bizkaia*.

The group of municipalities with less than 10,000 inhabitants gained 3,116 inhabitants and showed the highest positive annual variation, which is to say 0.8%. Of this group of municipalities, the ones whose population rose obtained an increase of 3,678 inhabitants, or 1.1% of its population, while the group of those that decreased lost 562 inhabitants, 0.7% of their original population.

In previous Population Updates produced by Eustat, population losses in this category had gradually diminished until, in 1995, the annual variation pattern changed to give a positive balance, a trend which was confirmed in the years that followed.

In four out of five of these municipalities the population variation was due to migratory balance, while in the remainder the population variations were determined by natural growth.