

# New technologies at home

+ Select the data you need from this table and produce the appropriate bar diagram.

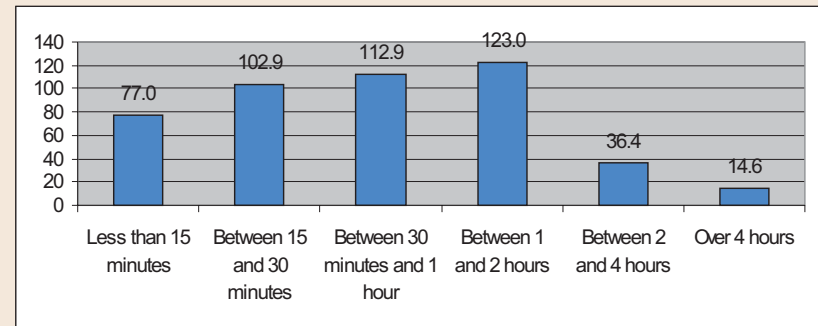
**Duration of last access**

Less than 15 minutes	123.0
Between 15 and 30 minutes	102.9
Between 30 minutes and 1 hour	112.9
Between 1 and 2 hours	77.5
Between 2 and 4 hours	36.4
Over 4 hours	14.6

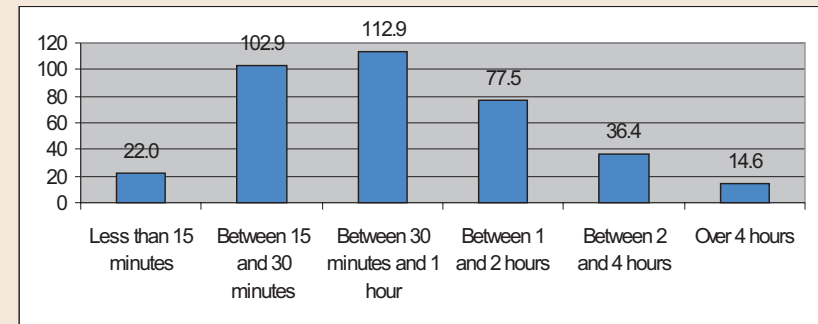
1/ The correct diagram is:

- A
- B
- C

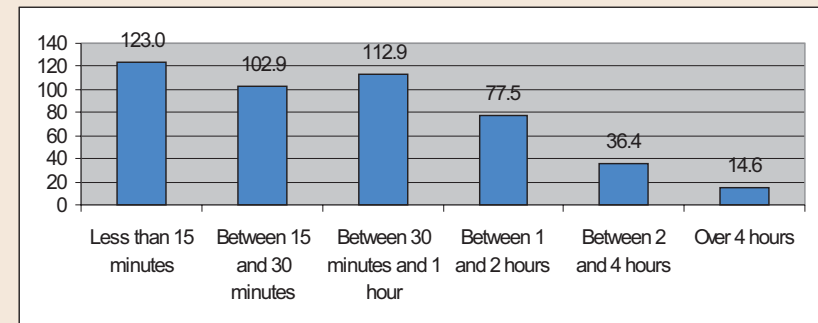
A



B

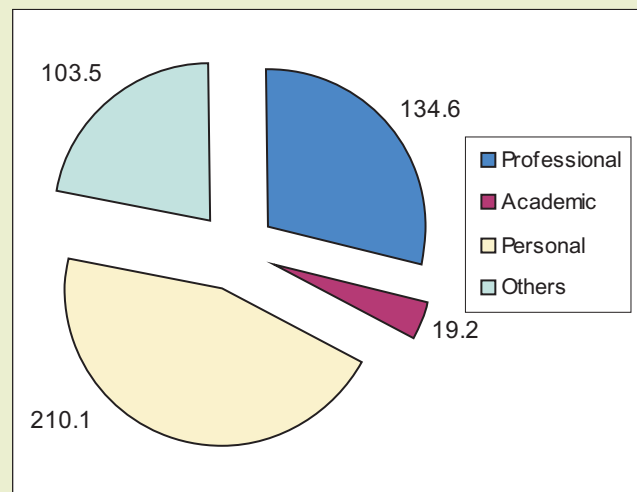


C



# New technologies at home

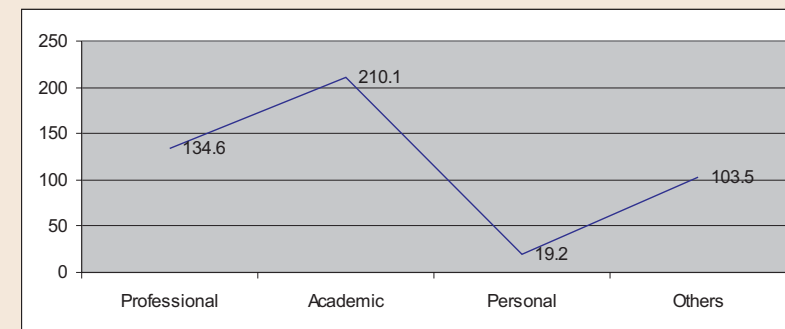
+ Which line diagram corresponds to this pie chart representing reasons for Internet access?



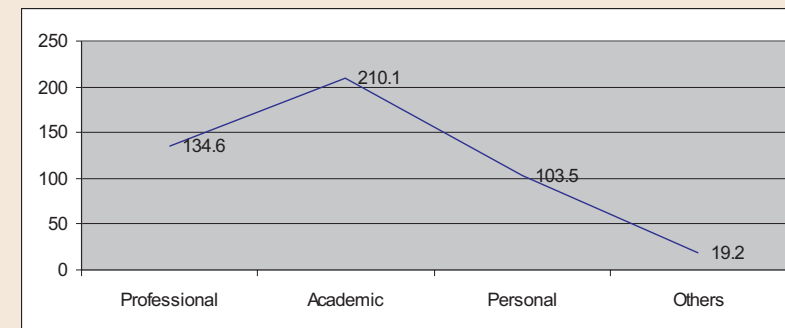
2/ The correct diagram is:

- A
- B
- C

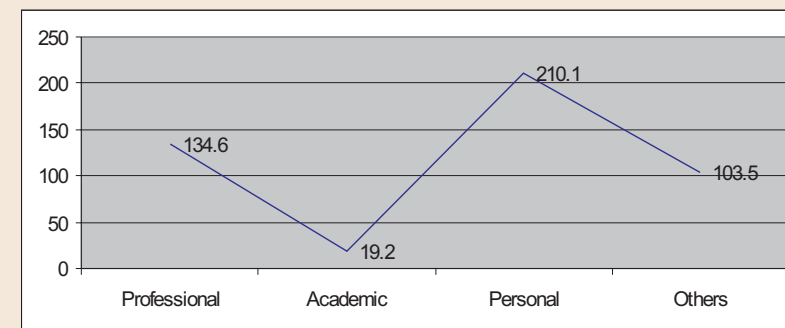
A



B



C



+ Which central angle corresponds to 45% in a pie chart?

- 3/      a)  $120^\circ$                       b)  $150^\circ$   
          c)  $162^\circ$                       d)  $170^\circ$

+ The following results were obtained after 45 people were asked about their favourite colour:

Blue	8
White	6
Black	5
Yellow	9
Green	10
Red	7

4/ Which one is the central angle for the colour yellow if you decide to make a pie chart?

- a)  $72^\circ$                               b)  $90^\circ$   
c)  $45^\circ$                               d)  $80^\circ$

5/ Which value will have a central angle of  $80^\circ$ ?

- a) Blue                                b) Black  
c) Yellow                              d) Green

+ According to our data, 60% of people who use Internet regularly are men. Which central angle of a pie chart would correspond to "women"?

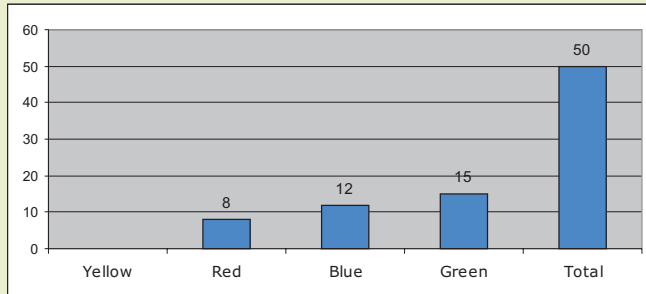
- 6/      a)  $144^\circ$                               b)  $180^\circ$   
          c)  $120^\circ$                               d)  $90^\circ$

+ After asking 80 people about their favourite colour, the central angle of the pie chart for the "blue" value is  $72^\circ$ . The number of answers for that value is:

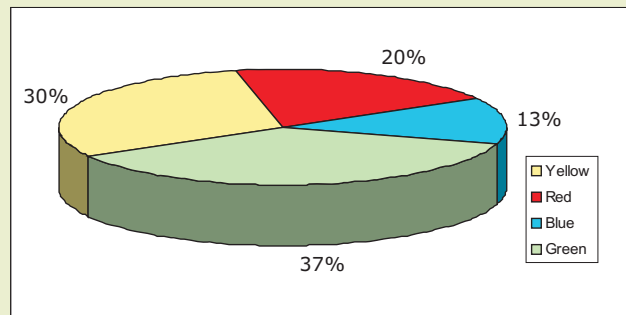
- 7/      a) 20                                      b) 72  
          c) 16                                    d) 14

# New technologies at home

+ Find out the frequency of the "yellow" value for the "favourite colour" variable, according to the data from the following diagram:



+ Work out the frequency for the "red" value for the "favourite colour" variable, using the data from this pie chart, given that the total amount of answers is 50.



+ One of these statements is false. Which one?

- 8/ a) 8 b) 15  
c) 12 d) 16

- 9/ a) 10 b) 20  
c) 25 d) 30

- 10/ a) The value with the highest frequency will have the greater central angle of the pie chart.  
b) If a value represents 50% of all answers in a survey, its central angle on a pie chart will be  $180^\circ$ .  
c) If a variable has a central angle of  $90^\circ$  on a pie chart, its value will have a frequency over 20%.  
d) The value with the highest frequency will have a  $90^\circ$  central angle on a pie chart.

# *New technologies at home*

Test solutions:

- 1. c
- 2. c
- 3. c
- 4. a
- 5. d
- 6. a
- 7. c
- 8. b
- 9. a
- 10. d