

# The Basque Country's Population

This multiple choice test will show you how much you have learned from this Unit.

+ The following table shows Basque population trends between 2000 and 2005.

	Basque Country			Alava			Bizkaia			Gipuzkoa		
	Total	Males	Females	Total	Males	Females	Total	Males	Females	Total	Males	Females
2005	2,115,383	1,033,400	1,081,983	301,800	150,245	151,555	1,127,291	546,277	581,014	686,292	336,878	349,414
2004	2,104,396	1,028,179	1,076,217	298,166	148,503	149,663	1,122,410	543,861	578,549	683,820	335,815	348,005
2003	2,095,014	1,023,506	1,071,508	294,012	146,304	147,708	1,119,697	542,725	576,972	681,305	334,477	346,828
2002	2,089,950	1,020,775	1,069,175	291,038	144,563	146,475	1,119,849	543,047	576,802	679,063	333,165	345,898
2001	2,085,058	1,018,799	1,066,259	287,560	142,688	144,872	1,120,591	543,985	576,606	676,907	332,126	344,781
2000	2,079,210	1,015,970	1,063,240	284,596	141,115	143,481	1,122,180	545,160	577,020	672,434	329,695	342,739

1/ What was the population of Bizkaia in 2003?

- a) 543,861      b) 542,725  
c) 576,972      d) 334,477

2/ Work out the population increase of Alava in 2002, that is to say, between 2002 and 2003.

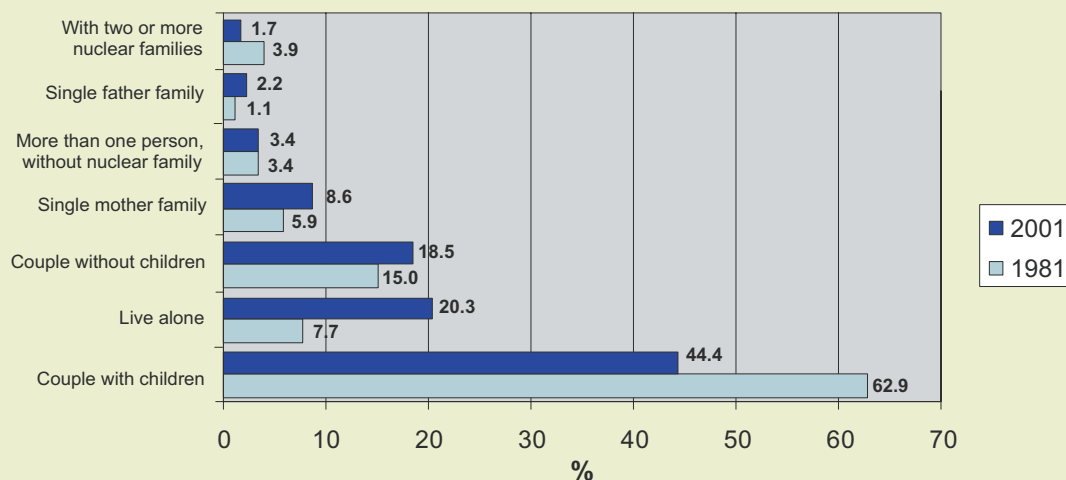
- a) 3,234      b) 3,974  
c) 2,974      d) 2,984

3/ According to the data, the population of Gipuzkoa as a percentage of the total population of the Basque Country is:

- a) 32.44%      b) 36.56%  
c) 45%      d) 23.44%

+ Look at the following chart and choose the right answers:

Evolution of family types. Basque Country. 1981-2001 (%)



4/ The percentage of couples with children in 2001 was:

- a) 45%      b) 62.9%  
c) 44.4%      d) 20.3%

5/ The percentage increase of couples without children between 1981 and 2001 was:

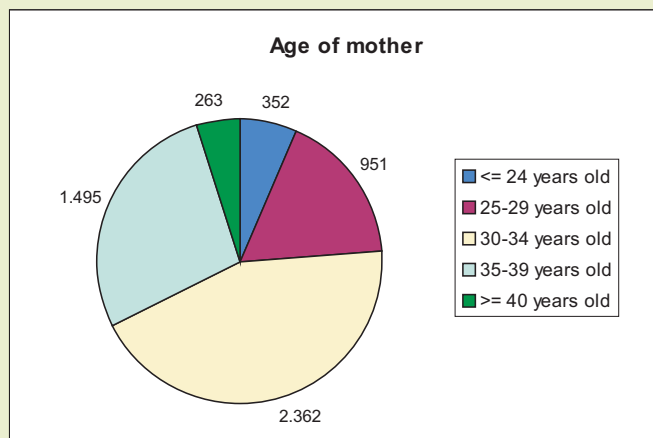
- a) 26%      b) 23.3%  
c) 31%      d) 24.2%

6/ There is one kind of family whose percentage remained unchanged between 1981 and 2001:

- a) More than one person, no nuclear family.  
b) Living alone.  
c) Single parent (mother).  
d) Single parent (father).

# The Basque Country's Population

+ Look at the following chart and choose the right answers:



7/ Most children are born to mothers who are:

- a) 35-39 years old
- b)  $\geq 40$  years old
- c) 30-34 years old
- d)  $\leq 24$  years old

8/ The percentage of children whose mothers are under 24 years old is:

- a) 7.2%
- b) 7.1%
- c) 6.9%
- d) 6.5%

9/ The percentage of children whose mothers are over 35 years old is:

- a) 32.42%
- b) 26%
- c) 6%
- d) 33.56%

+ Read the following text carefully and choose the right answers:

**Between 2001 and 2006, there was a significant inflow of Bolivians and Romanians; figures for existing nationalities were consolidated**

Between 2001 and 2006, there were 95,313 foreigners in the Basque Country, 4.5% of the total population. There were only 31,167 in 2001. The majority were of working age and aged between 20 and 40. Most of them arrived from South America (43.8%) and were mainly women from Colombia, Bolivia or Ecuador. Europeans accounted for the second largest group of immigrants (27.8%) and were mainly men from Romania and Portugal.

Four out of the six most represented nationalities were already on the list in 2001. The biggest increase was among Bolivians, who rose from 125 in 2001 to 8,961 in 2006; 72% of whom settled in Greater Bilbao. Romanians rose from 582 to 7,934 in number and were evenly distributed throughout the Basque Country. Alava had the highest percentage of immigrants (6.3%) of all three provinces. In terms of cities and towns, Baños de Ebro (14%) and Leza (11.3%) were home to the largest share of immigrants.

10/ The total amount of foreigners arriving from South America was:

- a) 40,654
- b) 42,876
- c) 41,747
- d) 39,782

11/ In 2006, the number of Bolivians in Greater Bilbao was :

- a) 7,200
- b) 5,897
- c) 6,514
- d) 6,451

12/ Between 2001 and 2006, the number of Romanians rose by:

- a) 12.63%
- b) 1263%
- c) 126.3%
- d) 1.26%



# *The Basque Country's Population*

Test solutions:

1. b
2. c
3. a
4. c
5. b
6. a
7. c
8. d
9. a
10. c
11. d
12. b